

**TIME AND MONEY SAVED SOLUTIONS
FOR YOUR BUILDINGS AND ROADS**



BOYDUR MARKER 564

**METHYL METHACRYLATE (MMA) BASED TWO-COMPONENTS, HIGH QUALITY
ROAD MARKING PAINT WITH 2-3 MM. THICKNESSES**





Discover High Quality and Durability in Road Markings with Boydur® Marker 564!

Reach the pinnacle of excellence in road markings with Boydur® Marker 564 Methyl Methacrylate (MMA) based road paint that grabs the attention of drivers, pedestrians, and experts. This two-component, cold-applied road paint is designed with precision and durability, changing the game. It offers a reliable solution for organizations specializing in road marking and those who frequently need to refresh surface aesthetics, designed to thrive in both indoor and outdoor environments.

Capture the attention of drivers, pedestrians, and experts with Boydur® Marker 564. This two-component, cold-applied road paint, designed with precision and durability in mind, changes the game. It can be successfully used both indoors and outdoors, providing a reliable solution for organizations specializing in road markings and an ideal option for those who frequently need to refresh the aesthetics of the surface.

Where Can Boydur® Marker 564 Be Used?

It provides an excellent solution for roads, squares, and areas where road paint deteriorates rapidly and causes interruptions. It offers durable and long-lasting results for sensitive road markings such as pedestrian crossings, arrows, and signage. It presents an ideal solution for individuals and organizations tired of constant road marking corrections. It offers a more permanent alternative for challenging surfaces and areas where standard road paint application is difficult. It is ideal for profile road marking applications. It is indispensable for outdoor areas vital to factory entrances, loading areas, and workplace safety. It is important for airport platforms, taxiways, and critical road areas where aircraft cross the runway. It is crucial for ports, loading and unloading areas, and port entrances and exits.

It is essential for marking parking lots, pedestrian crossings, directional arrows, and entry-exit areas. What Sets Boydur® Marker 564 Apart? It is produced from methyl methacrylate (MMA), which is the gold standard for cold-applied road paint. The two-component formulation guarantees optimal performance. It is produced in compliance with RAL traffic paint colors such as white, yellow, green, and red. It has a fast drying time, typically completed within one hour. It is resistant to UV rays and other atmospheric conditions, providing long-lasting performance.

Versatile Applications: Boydur® Marker 564 can be easily applied to surfaces such as asphalt, concrete, surface hardeners, and mosaics. It excels in heavy-duty areas with high traffic volume. Whether you need to create lines, arrows, pedestrian crossings, or complex letters and numbers, this product offers a user-friendly solution. Application areas include urban and rural roads, industrial areas, airports, military zones, parking lots, shopping malls, stadiums, ports, factories, warehouses, and much more.

Technical Specifications:

Form: Liquid

Main Component: Methyl Methacrylate (MMA)

Color: Traffic colors compliant with RAL standards (white, yellow, green, red)

Density: 1.8-2.0 g/cm³

Film Thickness: 2-3 mm Consumption Rate (for 2-3 mm thickness): Approximately 5-6 kg/m²

Shelf Life: 6 months in a dark and dry environment at 20°C without opening the packaging

Packaging: 25 kg

Application Instructions:

The materials required for preparation are as follows:

Boydur® Road Liner (self-leveling road marking application machine), string and chalk for templates, masking tape, trowel, and hedgehog roller. The chemical materials include glass powder, Boydur® A10 (concrete primer), Boydur® S90 (cleaner), and Boydur® FA Profiler.

The following steps should be followed for surface preparation:

Work in a well-ventilated area. The surface should be dry, clean, and solid. Greasy areas should be dried by burning them. Boydur® repair mortar should be used for repairs.

The application process is as follows:

Boydur® Marker 564 application requires experience. Material preparation should be done when working with Boydur® Road Liner. After placing the templates, pour the material onto the templated area and spread it evenly with a trowel. Air bubbles should be eliminated using a hedgehog roller. If desired, glass powder can be sprinkled after the application, and excess should be cleaned with a broom.

Points to be noted:

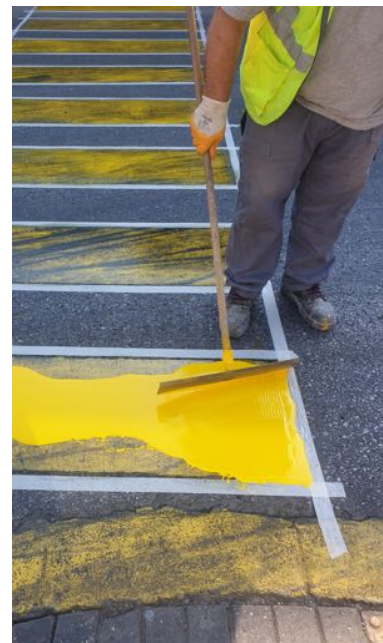
The curing time should be completed before applying to a new surface. The surface should be dry, clean, and solid. No other chemicals should be used. Problems should be resolved in advance. Consult the technical team for measurements. Preliminary sample work should be conducted. Application should not be done under direct sunlight in hot weather.

Discover the potential of precise and long-lasting road markings with Boydur® Marker 564. This two-component, cold-applied road paint based on methyl methacrylate (MMA) is an essential solution for professionals offering exceptional quality, reliability, and visual impact. When you want to enhance roads and safety features or revitalize worn surfaces, Boydur® Marker 564 provides outstanding performance.

Don't settle for ordinary road markings - choose Boydur® Marker 564 and leave your mark with confidence. Contact us today to explore the power of precision and durability in road marking solutions.



"The first self-leveling road paint in Turkey."





BOYTORUN KİMYA SANAYİ A.Ş.
İ.E.T.T. Sitesi 3,Blok,D:1, 34467,Emirgan- İstanbul-TR.
Tel: 0212 229 28 29-34, WhatsApp: 0542 437 9005
E-Mail: info@boytorun.com, Web: www.boytorun.com